



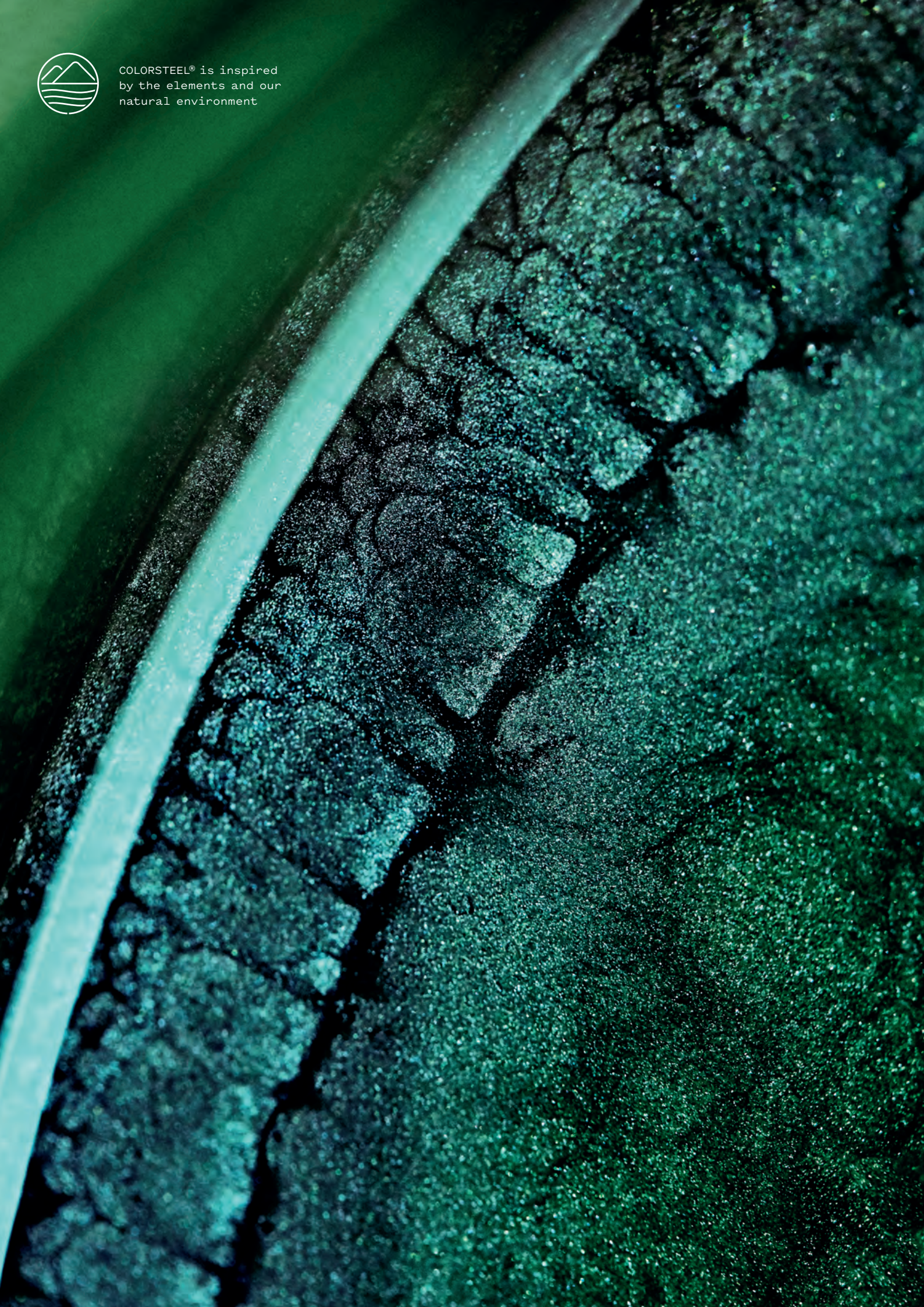
TRANSFORM



EVERYDAY



COLORSTEEL® is inspired  
by the elements and our  
natural environment





COLORSTEEL® is the result of  
thousands of hours of rigorous  
testing in real-life environments

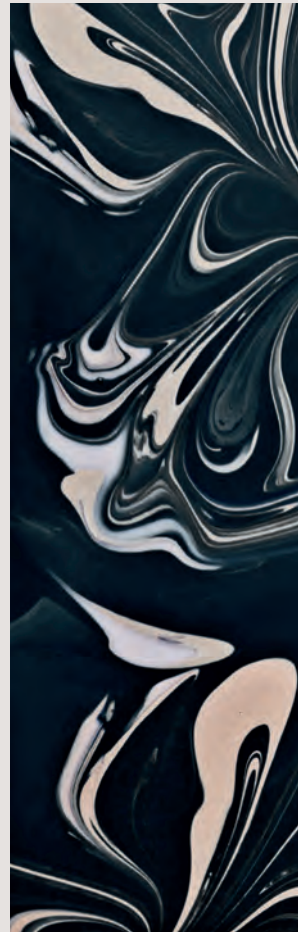


COLORSTEEL® is made, tested and trusted for New Zealand conditions. We are inspired by the colours and landscapes that surround us and, in turn, we strive to create products that will inspire you.

We also strive to care for these natural environments through a stringent environmental management system that ensures we are looking after our place for future generations. We are proud that all COLORSTEEL® products carry the Environmental Choice New Zealand certification – New Zealand’s official label for strong, proven environmental performance – so you can be sure you are making the best possible choice.

For us it’s about more than just roofing: it’s about turning metal into magic and inspiring confidence. Combining beauty, durability and flexibility across a range of products, profiles and colours that have been designed around your needs.

01



03



Pre-painted and Resin  
Coated Steel Products  
Licence No. 5717145



01. We have carefully developed a palette that reflects every aspect of life in New Zealand  
02. Joynes Hideaway, Coromandel, COLORSTEEL® Endura® in Ebony. Designed by Noel Jessop  
03. Tent House, Waiheke Island, COLORSTEEL® Endura® in Ebony. Designed by Chris Tate



02



# Choosing COLORSTEEL®

Your step by step guide to  
choosing the COLORSTEEL®  
solution that's right for you.



# 01

## SOLUTION

We're fortunate to live in New Zealand. But with such beautifully varied landscapes come equally varied conditions. We need roofing and cladding that can stand up to a range of extreme environments.

All COLORSTEEL® solutions are designed to perform across a wide range of applications and environments.

We know that New Zealand weather and conditions can often be hard to categorise – let alone predict. So if you're not sure which solution or grade you need, or you think your location might experience particular or extreme environmental conditions, speak to your supplier or contact us on 0800 100 523 and we can help you choose the COLORSTEEL® solution that's right for you.



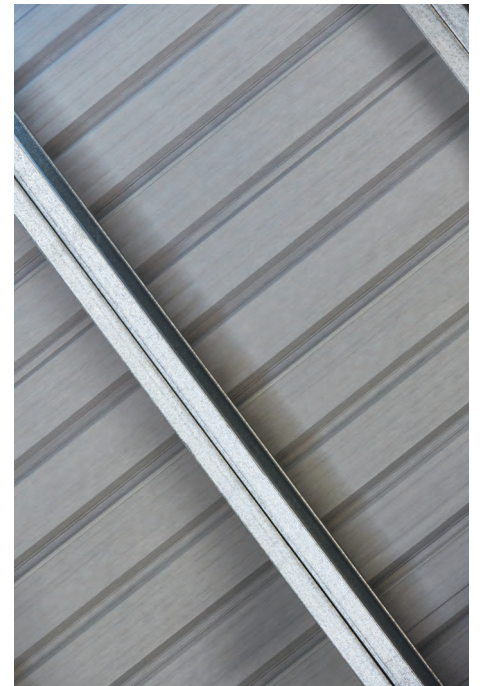
### ENDURA®

The choice for New Zealanders right around the country, this is the perfect roofing material for everything from mild and moderate inland conditions to more severe coastal environments. Also recommended for cladding on buildings that experience mild to moderate conditions.



### MAXX®

Specifically developed to withstand higher atmospheric salt concentrations and incredibly resistant to corrosion, this is an option for extreme conditions like New Zealand's rugged coastline or geothermal areas. Designed to provide added protection and peace of mind, it is recommended for buildings that experience severe to very severe conditions.



### DRIDEX®

An innovative roof and wall cladding system that delivers superior condensation absorption and allows for enhanced ventilation, creating a drier and healthier internal environment. This leads to the reduction of mould and other pollutants which are associated with asthma as well as other respiratory tract inflammations and allergies. Recommended for buildings that experience mild to severe conditions.

# 02

## COLOUR

The right colour should work harmoniously with the rest of your home and the surrounding environment. But it should also reflect your own style and personality.

Our colour range is inspired by our home – the beautiful, diverse and ever-changing landscape of New Zealand.

All COLORSTEEL® products undergo intense, long-term exposure testing to ensure the colour performance and durability of your roof or cladding.

For even more inspiration, visit [colorsteel.co.nz](http://colorsteel.co.nz)



We have carefully developed a palette that reflects every aspect of life in New Zealand

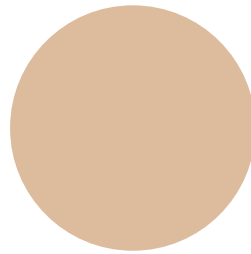




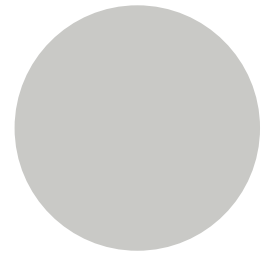
**TITANIA**  
TSR 67% LRV 69%



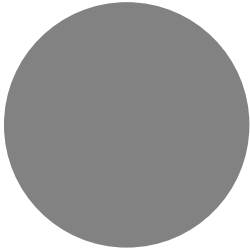
**CLOUD**  
TSR 72% LRV 76%



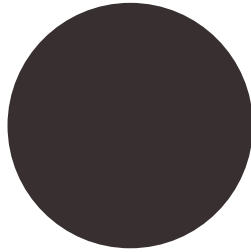
**DESERT SAND**  
TSR 58% LRV 51%



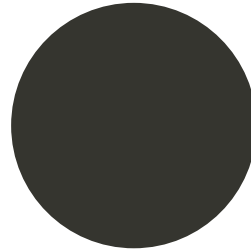
**GULL GREY**  
TSR 57% LRV 50%



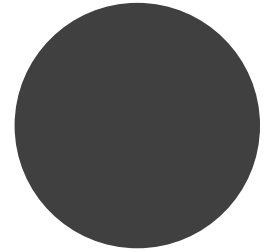
**SANDSTONE GREY**  
TSR 42% LRV 27%



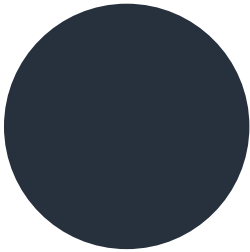
**SLATE**  
TSR 27% LRV 9%



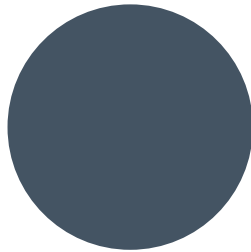
**IRONSAND**  
TSR 28% LRV 8%



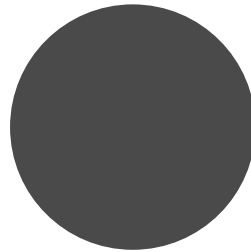
**THUNDER GREY**  
TSR 30% LRV 12%



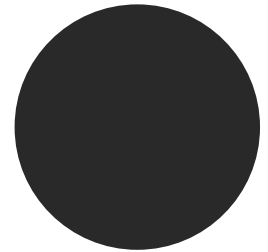
**WINDSOR GREY (G10)**  
TSR 23% LRV 7%



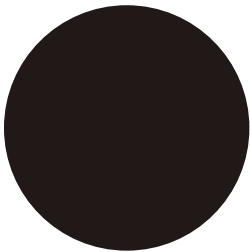
**NEW DENIM BLUE**  
TSR 25% LRV 11%



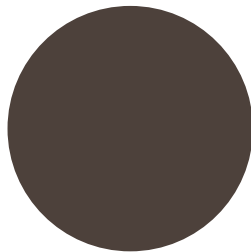
**GREY FRIARS**  
TSR 28% LRV 10%



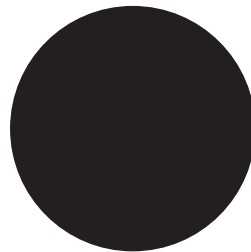
**EBONY**  
TSR 5% LRV 5%



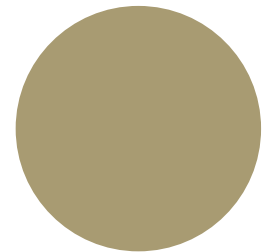
**FLAXPOD®**  
TSR 25% LRV 7%



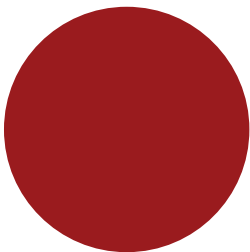
**LIGNITE**  
TSR 30% LRV 11%



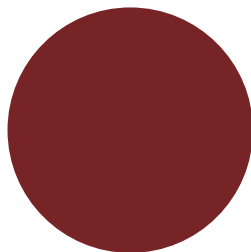
**KARAKA**  
TSR 25% LRV 8%



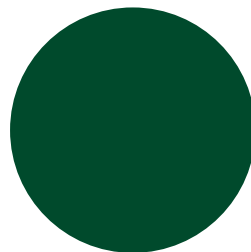
**LICHEN**  
TSR 44% LRV 28%



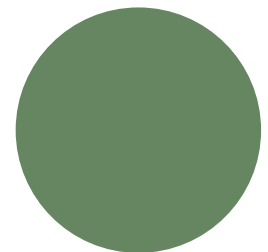
**PIONEER RED**  
TSR 36% LRV 15%



**SCORIA**  
TSR 32% LRV 12%



**PERMANENT GREEN**  
TSR 26% LRV 10%

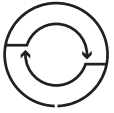


**MIST GREEN**  
TSR 40% LRV 25%

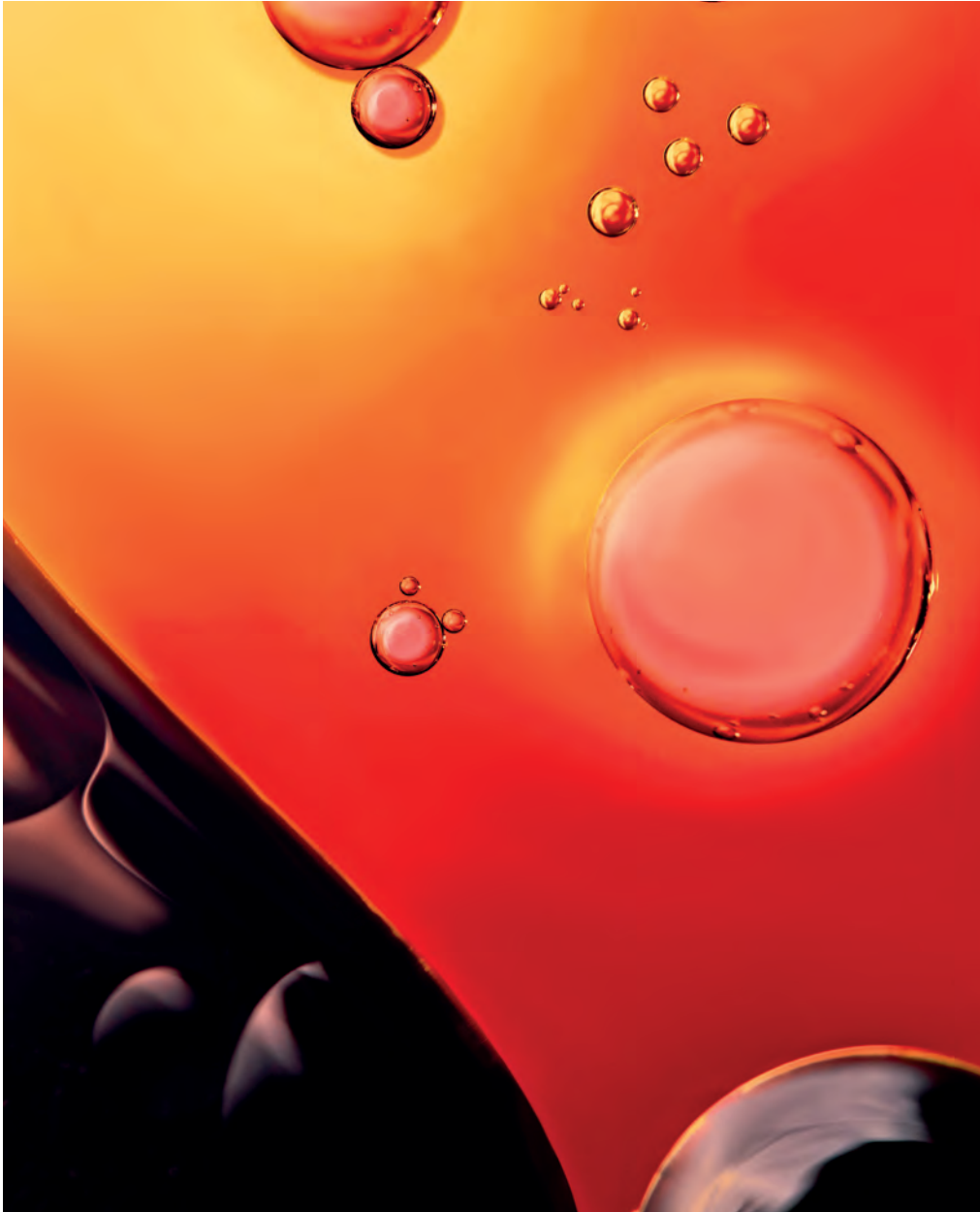
These are our most popular colours, but we do offer a wider range including a selection of metallics and a high solar reflectance solution. Contact us on 0800 100 523 for more information.

Make sure you request a COLORSTEEL® pre-painted steel sample from [colorsteel.co.nz](http://colorsteel.co.nz) or your supplier, for complete colour accuracy before making your final colour selection and decision.

TSR: Total Solar Reflectance LRV: Light Reflectance Value G10: Low Gloss



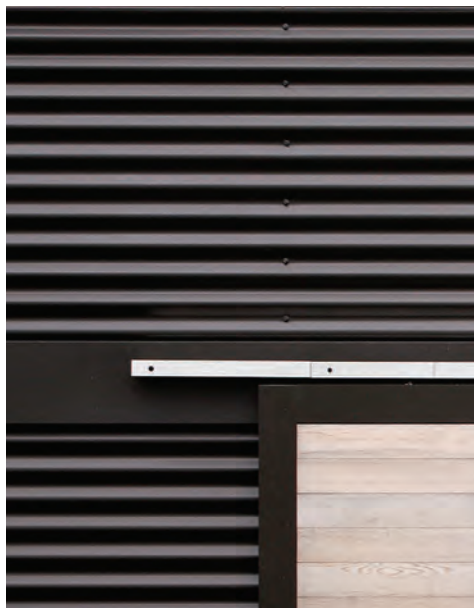
For over 35 years we have continued  
to innovate to ensure COLORSTEEL®  
stands the test of time



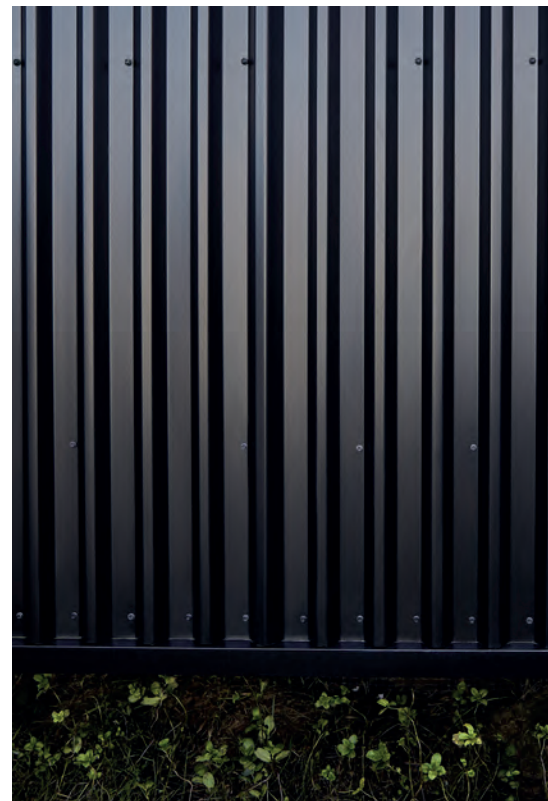


Intelligent solutions:  
The Mt Eden House, COLORSTEEL® Maxx® Ironsand.  
Designed by Strachan Group Architects





02



- 01. Tray
- 02. Corrugate
- 03. Trapezoidal
- 04. Trapezoidal

# 03

## PROFILE

Colour is a key driver when you're choosing cladding or a new roof, but the profile can play an equally important role in achieving the look and style you want.

Basically, the profile means the shape of the metal sheet. The three most popular categories are: corrugate, trapezoidal and tray.

04



03



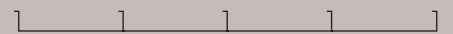
**CORRUGATE** is a symmetrical, wave-like pattern. Widely used on many thousands of Kiwi homes, it lends a softened visual aspect and suits a wide range of home designs.



**TRAPEZOIDAL** profiles are generally sharper and more modernistic in their look, with crisp, clean lines creating a very bold and distinctive impression.



**TRAY** profiles are noticeably sleek and are often favoured by those intent on designing very contemporary-styled homes.



COLORSTEEL® suppliers can provide a wide range of profiles to match the look of almost any home or commercial structure. For a full list of COLORSTEEL® suppliers, head to [colorsteel.co.nz/suppliers](http://colorsteel.co.nz/suppliers)

Different roof designs may influence which profile options will work best. Your COLORSTEEL® supplier will be able to discuss this with you.



COLORSTEEL® is designed with  
New Zealand's challenging  
and variable climate in mind

# Living with COLORSTEEL®

COLORSTEEL® is made in New Zealand, for New Zealand conditions, and it's made to last. For over 35 years it has proven itself in everything from classic villas and contemporary masterpieces to rural buildings and commercial structures all over the country.

We're proud to stand behind the performance of all our products, and that's why COLORSTEEL® is backed by a range of warranties. Your warranty will vary depending on your chosen solution and environment. Contact us, talk to your supplier, or visit [colorsteel.co.nz/warranty](http://colorsteel.co.nz/warranty) for more detailed information.

Remember, there's only one COLORSTEEL®. So always confirm with your supplier that you are getting genuine COLORSTEEL® and ask for a copy of your COLORSTEEL® warranty.



## OUR RESIDENTIAL ROOFING PERFORMANCE WARRANTY\*

		Environmental Categories		
		MODERATE	SEVERE	VERY SEVERE
<b>ENDURA®</b>	Perforation	30 years	15 years	Not recommended
	Paint	18 years	15 years	Not recommended
<b>MAXX®</b>	Perforation	30 years	20 years	15 years
	Paint	18 years	15 years	15 years
<b>DRIDEX®</b>	Perforation	30 years	Call to discuss	Not recommended
	Paint	18 years	Call to discuss	Not recommended

\* This chart is a guide only and applies to residential roofing. Design, position and other factors can influence which product is recommended. For full details, including information on the environmental categories and applications like cladding, guttering or for commercial warranties, please visit [colorsteel.co.nz/warranty](http://colorsteel.co.nz/warranty)

# The key steps to choosing COLORSTEEL®

# 01

## CHOOSE YOUR SOLUTION

Start with the environment you live in. Think about how close you are to the sea and geothermal areas, but also what you want to get from your COLORSTEEL® solution.

# 02

## DECIDE ON A COLOUR

Think about what you like, but also what will work – with your home, the surrounding landscape, and even with other homes around you.

# 03

## PICK A PROFILE

It's about form and function. Think about shapes and angles, but also about how different profiles might affect the overall appearance.



Trapezoidal Profile  
COLORSTEEL® Endura® Ebony



COLORSTEEL® Permanent Green  
and Mist Green



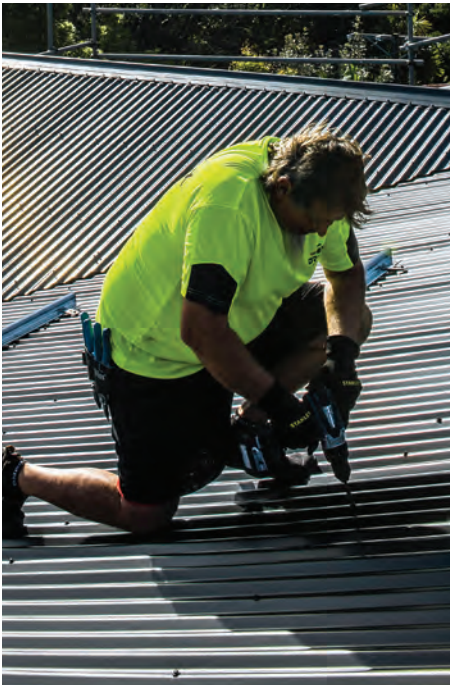
Tray Profile  
COLORSTEEL® Maxx® Ironsand



# 04

## FIND A SUPPLIER

Whether you're building new or renovating, it always pays to choose quality tradespeople and suppliers with a proven track record.



Accredited installer laying  
COLORSTEEL® Dridex®

Once you've considered what works for your project, it's time to find a professional and trusted roofing and cladding specialist to supply and install it for you.

Head to [colorsteel.co.nz/suppliers](https://colorsteel.co.nz/suppliers) to find a full list of COLORSTEEL® suppliers in your local area.



For more information and inspiration,  
visit [colorsteel.co.nz](https://colorsteel.co.nz)





Intelligent solutions:  
Joynes Hideaway, Coromandel,  
COLORSTEEL® Endura® Ebony.  
Designed by Noel Jessop





COLORSTEEL® is created for  
New Zealand, in New Zealand





The colours shown in this brochure are as close as normal printing processes allow and should be viewed under exterior lighting conditions. We recommend viewing exact COLORSTEEL® pre-painted steel samples before making your decision, available by contacting your local COLORSTEEL® supplier. Buyers and users of New Zealand Steel products and services must make their own assessment of the products for their own conditions.

All queries regarding product specification, purpose or application should be directed to New Zealand Steel, phone 0800 100 523. New Zealand Steel reserves the right to modify products, techniques, equipment and statements to reflect improvements in the manufacture and application of its products. The information contained in this brochure is supplied without prejudice to New Zealand Steel's standard terms and conditions of sale. In the event there is conflict between this information and the standard terms and conditions, the standard terms and conditions prevail. This brochure supersedes all previous editions of COLORSTEEL® Maxx® and COLORSTEEL® Endura® colour charts. COLORSTEEL®, COLORSTEEL® Maxx® and COLORSTEEL® Endura® are registered trademarks of New Zealand Steel Limited. Images are reproduced with the consent of the owners thereof.